



EURORDIS Open Academy Training

Practicalities document

Barcelona, Spain
June 2025

Venue: Hotel Front Maritim
Passeig de Garcia Fària, 69, 08019 Barcelona



Metro and tram: Selva de Mar

Organised with the support of the European Rare Disease Research Alliance

E-DEERA European **Rare Diseases**
Research Alliance

Arriving at the Hotel

Barcelona – El Prat Airport

By bus (approx. 1h15)

For the most convenient and quickest bus option, take the Aerobús from Terminal 1 or 2 to **Plaça Catalunya**, getting off at **Plaça Espanya**. This service is fully accessible. Transit can be [booked online](#) and a single, one-way ticket costs 6,75€.

From Plaça Catalunya, take the **H16** bus to **Fòrum Campus Besòs** at Plaça Espanya to **Passeig Taulat - Provençals** and the hotel is a 2 min walk away. A map of this route is available on the following page.

By taxi (approx. 20-30 minutes)

Taxis are available from Terminals 1 and 2, and the journey costs between 30-45€. A fully accessible and wheelchair-adapted taxi is available for booking by [phone or online](#). Booking at least 24h in advance is recommended.

By train and metro (approx. 1 hour)

From Terminal 2, take the Rodalies R2 train, direction **Granollers Centre**, to **Barcelona Sants**. Please find further information on travel from Barcelona Sants station below.

Barcelona Sants train station

By train and metro:

For full accessibility, journeys changing at **Passeig de Gràcia** are recommended, as it is fully adapted.

From **Barcelona Sants**, walk to **Sants estació** (Metro), take Line 3 (direction Trinitat Nova) to **Passeig de Gràcia** and switch to Line 4 (direction La Pau) to **Selva de Mar**.

From **Selva de Mar**, Hotel Front Maritim is a short 8-minute walk away. A map of this route is available on the following page.

Parking

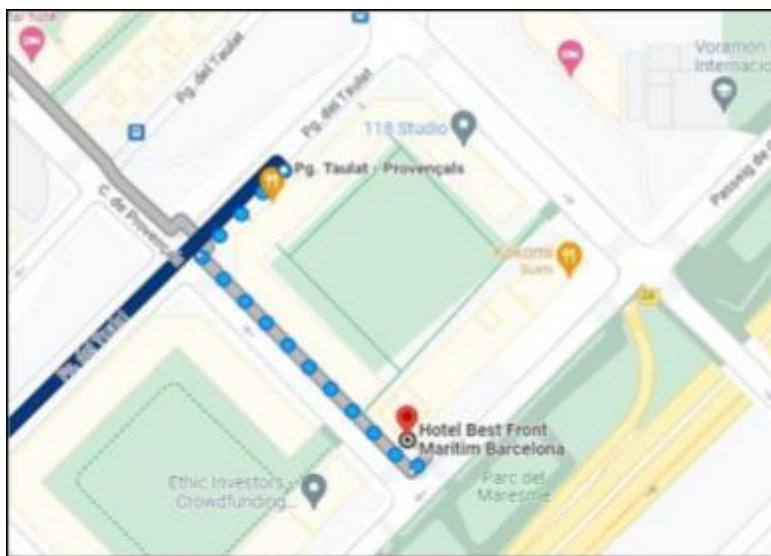
Secure onsite parking is available at **Hotel Front Marítim**. The group booking includes 5 free parking spaces for the duration of the Open Academy only, and a reduced rate of **8,00€** per for additional parking reservations. We recommend reserving parking in advance if you intend to bring your vehicle.

Tickets

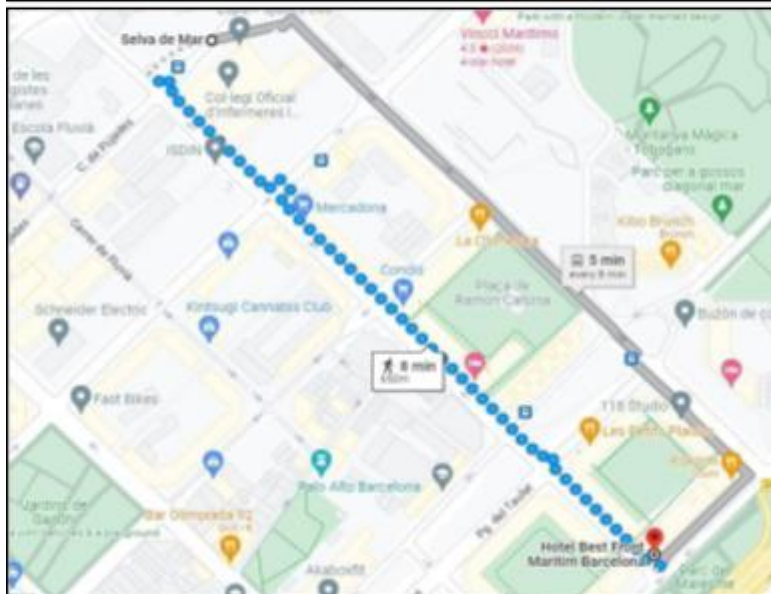
Single tickets are available for travel on all modes of transport.

In the metro, they can be purchased from the red machines in the entrance. On the bus, tickets are purchased from drivers. Exact change is recommended. For most visitors, the **T-casual** is recommended, as it includes travel on metro, buses and RENFE Rodalies trains, within Zone 1. This zone covers the majority of Barcelona's districts, however, it **DOES NOT** include travel to and from the airport. A separate ticket would need to be purchased for that journey, depending on the mode of transport. The T-casual costs **11,35 €** and is valid for 10 separate journeys. It can be purchased in any metro station. A physical payment card is needed as contactless is unavailable. It can also be [purchased online](#) and collected in stations.

Alternatively, **Hola Barcelona** cards are available for short-stay visitors and can be [purchased online](#) for the appropriate number of days, starting from the first time they are validated. They **DO** include journeys to and from Barcelona El Prat Airport.



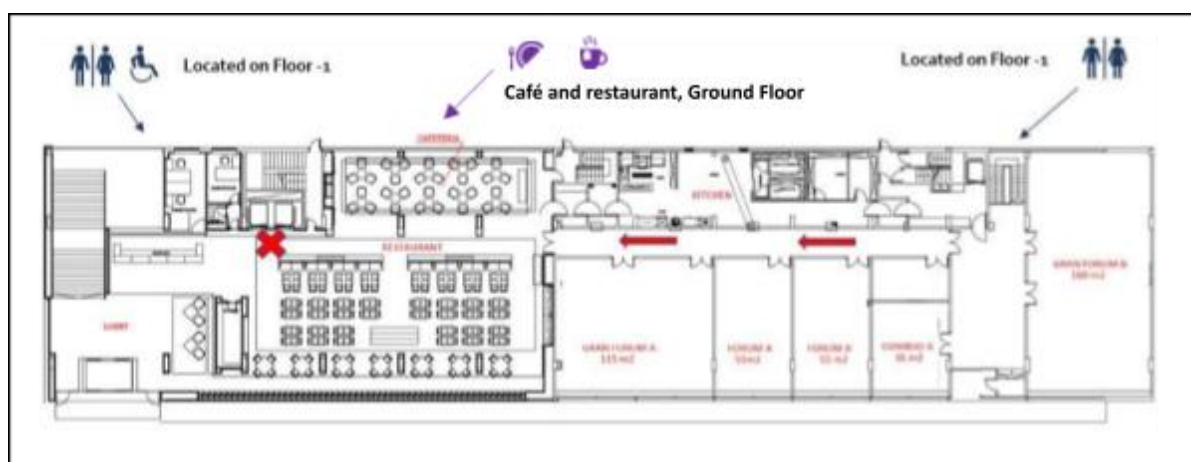
Section of map depicting the route from Passeig del Taulat bus stop to Hotel Front Maritim.



Section of map depicting the route from Selva de Mar metro station to Hotel Front Maritim.

Accessibility

At Hotel Front Marítim



Layout of the ground floor of Hotel Front Marítim, including the location of the conference rooms and elevators. The general location of toilets on the floor below is also indicated.

The hotel is fully accessible, and all elevators are wide enough to accommodate a wheelchair. The training sessions will take place in the conference rooms along the main corridor on the ground floor of the hotel and are labelled in red on the diagram above (from left to right: Gran Forum A, Forum A, Forum B, Consejo A, Gran Forum B – the largest suite at the end of the hallway).

All toilet facilities are located on the basement floor. Both male and female toilets are located directly below the conference suites and can be accessed via the stairs located next to Gran Forum B (see map). Additional male and female and wheelchair accessible toilets are located at the opposite side of the hotel (direction marked with red □ on map above) and can be accessed by elevator or stairs. The elevators are located in the main lobby, marked with a red X on the map above.

General Accessibility

Public transport: The Ajuntament de Barcelona and Transports Metropolitans de Barcelona have been working to make the city more accessible for all visitors. You can read more about accessibility on public transport on the [TMB website](#).

Airport: Assistance upon arrival at Barcelona El Prat Airport, including a lift service to disembark are available to book through the [AENA website](#). If you wish to use this service, we recommend that you reserve in advance.

Welcome Dinner

The Open Academy 2025 Welcome Dinner will take place on Monday 2 June at **Bravo** restaurant located in the Diagonal Mar shopping centre.

Restaurant Address: *Centro Comercial Diagonal Mar (Passeig del Taulat entrance), Avinguda Diagonal, 3, 08019 Barcelona*

For ease of access, it is recommended to enter from **Passeig del Taulat**, to avoid unnecessarily entering the main shopping centre. The restaurant is located on an open upper terrace and can be accessed through the main steps, an escalator or an elevator.

The elevator is fully adapted and wheelchair accessible and is located directly to the right of the main steps on Passeig del Taulat. A reference photograph can be found below.



Section of map depicting the walking route from Hotel Front Maritim to Bravo restaurant



Image of elevator location, to the right of the escalator on Passeig del Taulat

School on Scientific Innovation and Translation Research: Visit to Centre Nacional d'Anàlisi Genòmica

Centre Nacional d'Anàlisi Genòmica (CNAG) is fully accessible, including laboratories. Accessible toilets are available on site.

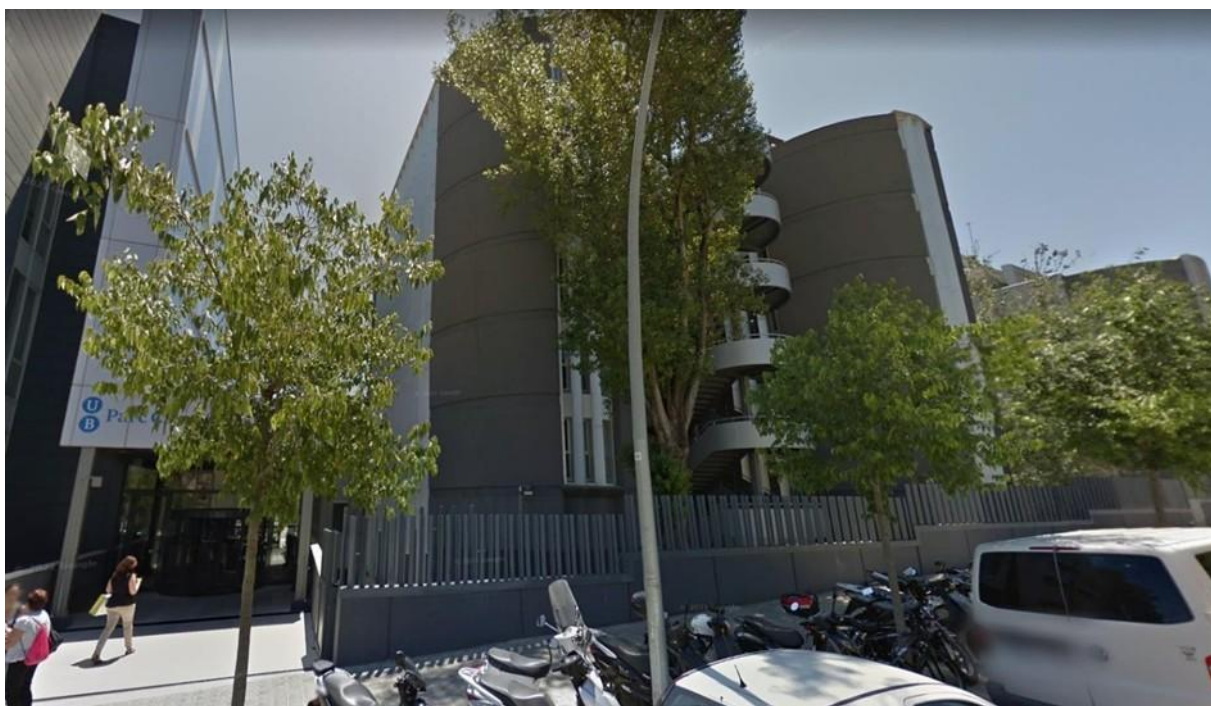


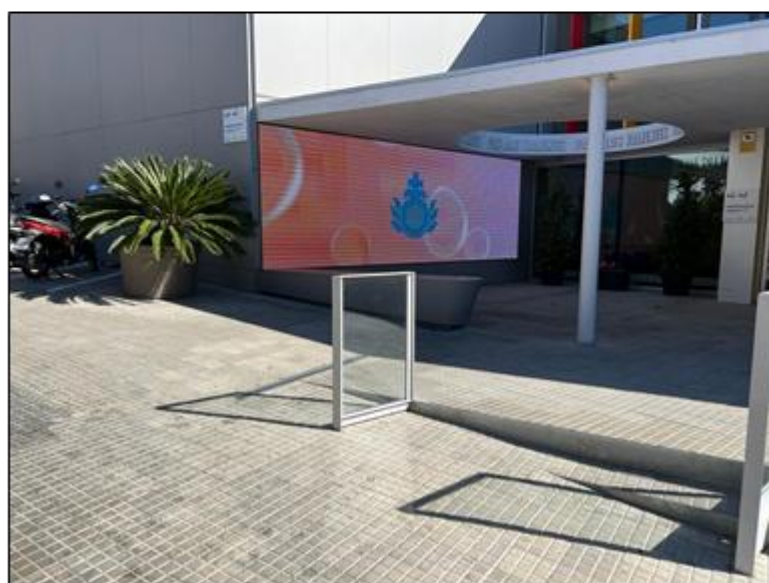
Image of exterior and entrance to CNAG

School on Medicines Research and Development: Visit to the Sant Joan de Déu Hospital

Sant Joan de Déu is a fully accessible site, and the visit will take place in the **Paediatric Cancer Centre Barcelona** building. All elevators are conveniently located and are wide enough to accommodate a wheelchair. The entrance has both steps and a gentle ramp. Male, female and accessible toilets are located where they can be accessed by elevator. Please see the photos below for reference.



Interior of a wide elevator.



Main entrance with steps and ramp.

Emergencies, healthcare & pharmacies

All emergencies number: 112

Closest hospital (urgent care department): Dos de Maig Hospital

C. del dos de Maig, 196, 08025 Barcelona

24-hour pharmacies: a list of pharmacies available 24h/day and their location can be consulted by following this [link](#). Please check updated opening times on Google before travelling.

Closest pharmacy:

Farmacia Iñigo Alberdi *Avinguda Diagonal, 84, 08019 Barcelona*

OR

Farmacia *Carrer del Dr. Trueta, 234, 08005 Barcelona*

Restaurants

Here are some suggestions for restaurants within a 10 minute walk of the hotel. Please contact them directly for reservations and accessibility information.

La Marea *Passeig de Garcia Fària, 33, 08005 Barcelona*

Seafood restaurant serving the best ingredients straight from the fish market to your plate.

101 Dim Sum *Carrer de Llull, 226, 08005 Barcelona*

Dim sum made daily in an artisan and traditional way, using fresh and local products.

Bambú Beach Bar *Platja Llevant, Av. del Litoral, 905, Q1, 08019 Barcelona*

Burgers, tacos, sushi & sharing platters, plus cocktails, served at a convivial deck on the beach.

There are also many affordable food and shopping options at the shopping mall **Diagonal Mar**. For directions to the shopping mall, refer to the section on the Welcome Dinner.

Supermarkets

The following supermarkets are open 9am-9pm, Monday to Saturday, and are fully accessible. Both are within walking distance from the hotel.

Mercadona *Carrer de Provençals, 22, 08020 Barcelona*

Lidl *Carrer de Lope de Vega, 112, 114, 08005 Barcelona*

For later opening times, a local Condis is open until 11pm, Monday-Saturday and is a 5 minute walk from the hotel.

Condis *Carrer de Ramon Turró, 332, 08019 Barcelona*

Key contacts

Marta Campabadal – *Open Academy Senior Manager (English, Spanish)*

+34 639 90 30 36 | marta.campabadal@eurordis.org

Gemma Rodríguez – *Open Academy Training Manager (, English, Spanish)*

gemma.rodriguez@eurordis.org